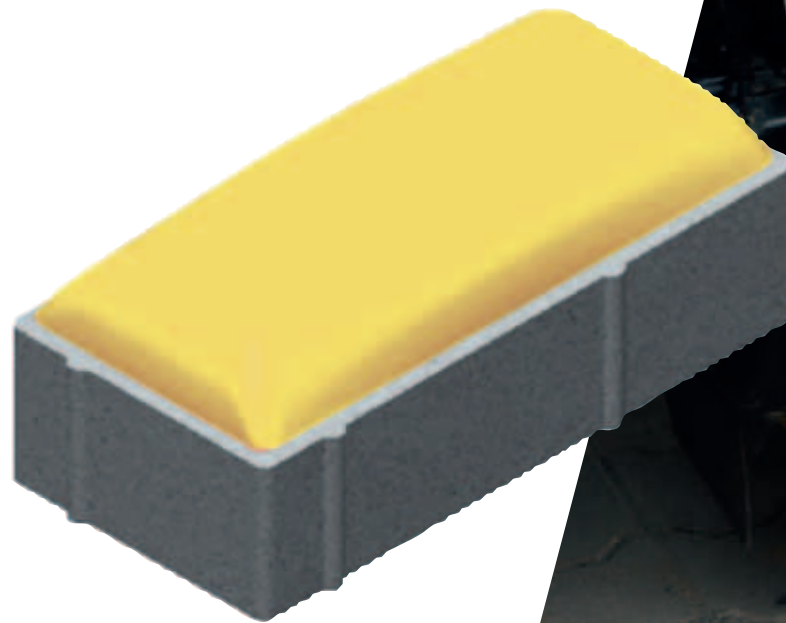


TECHNICRETE

Ripplesett®

heavy duty traffic calming block



TECHNICRETE

quality support

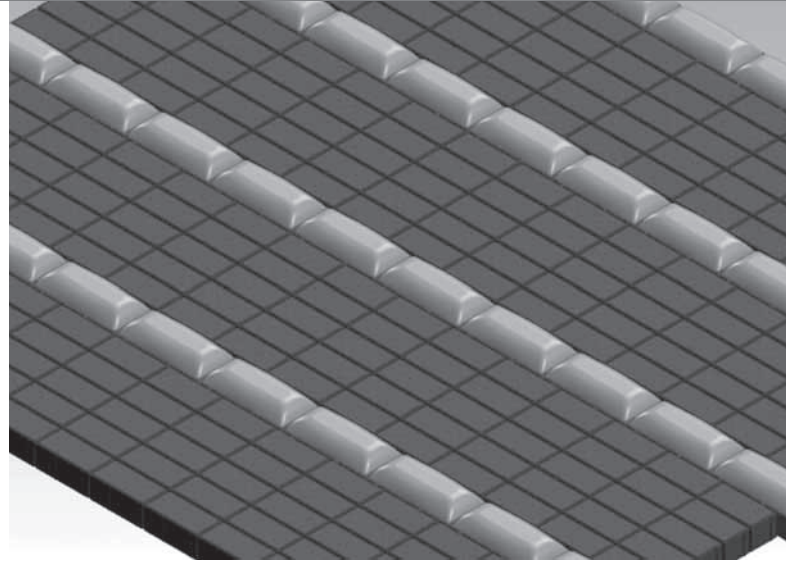
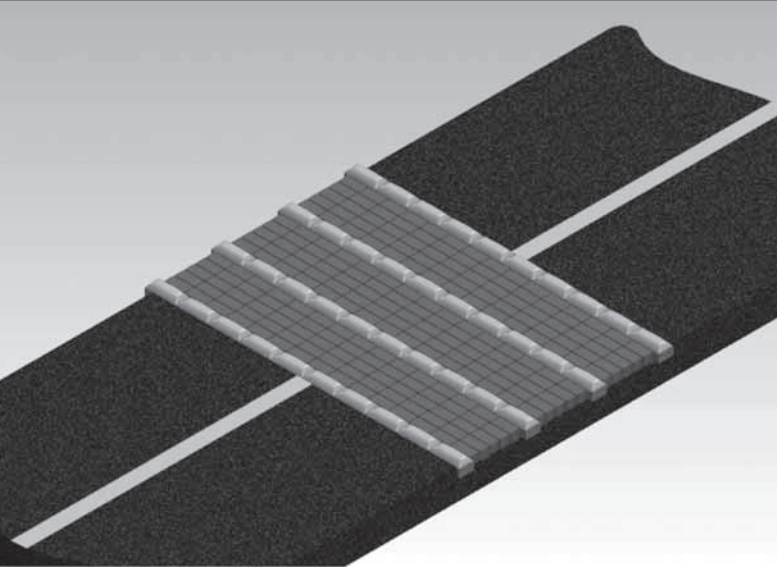
PAVING • SPECIAL PRODUCTS • CONCRETE ROOF TILES • KERBS • MASONRY • SHOTCRETES
EROSION PROTECTION BLOCKS • MINING • **TRAFFIC CALMING BLOCK** • PREBAGGED PRODUCTS
PRECAST PRODUCTS • RETAINING WALLS • STOPE SUPPORT SYSTEMS • HEAVY DUTY PAVEMENTS



TECHNICRETE


Ripplesett Block[®] heavy duty traffic calming block

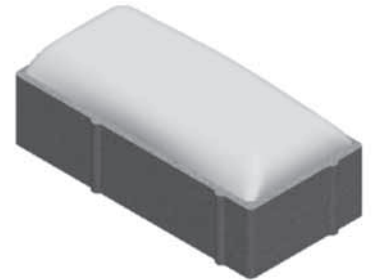
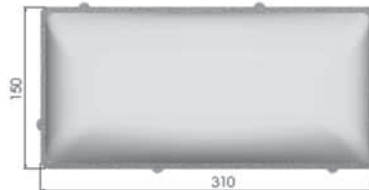
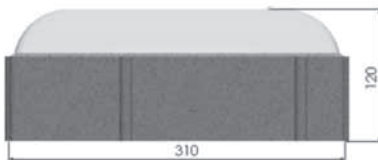
• LAYING PATTERN



Ripplesett Blocks must be spaced 450mm-550mm apart to create the 'Drag' on a vehicle to reduce speeding. Motorists must be advised of this obstruction before they drive over this calming system.

Colours shown on front may vary from the true colour due to the printing process.

| Description | Nominal size | Dimensional tolerances | Nominal wearing face area | Spec. & test procedure | Surface finish |
|--|--------------------------------------|--|--|---|--|
|  <p>Type SC paving block with top surface contoured to limit traffic speeding with no vehicle damage</p> | 310(L) x 150(W)mm 120mm thickness | Length & width = $\pm 3.5\text{mm}$ Thick = $\pm 5\text{mm}$ | Contoured – must be cut or capped (46500mm ²) | In accordance with this specification sheet concrete at a nominal 35 MPa. Top surface to be capped prior to soaking | Course for painting and abrasion resistance. |



Technicrete reserves the right to change or amend the contents of this document at anytime without any notice with this document intended for general information only. Any specific information required about product specifications, applications, technical information, sales conditions, warranties and guarantees as required for any design or installation should be obtained from Technicrete.



TECHNICRETE
quality support

Technicrete House

Cnr. Main Reef Road & Houtkapper Street, Roodepoort, 1725
Tel: 011 674 6900 – Fax: 011 672 1425
Email: info@technicrete.co.za
www.technicrete.co.za
0861 266267



Branches:

Carletonville: 011 372-8500
Stilfontein: 018 484-3089
Olifantsfontein: 011 203-7700

Polokwane: 015 298-8083
Welkom: 057 391-4200
Witbank: 013 696-1153