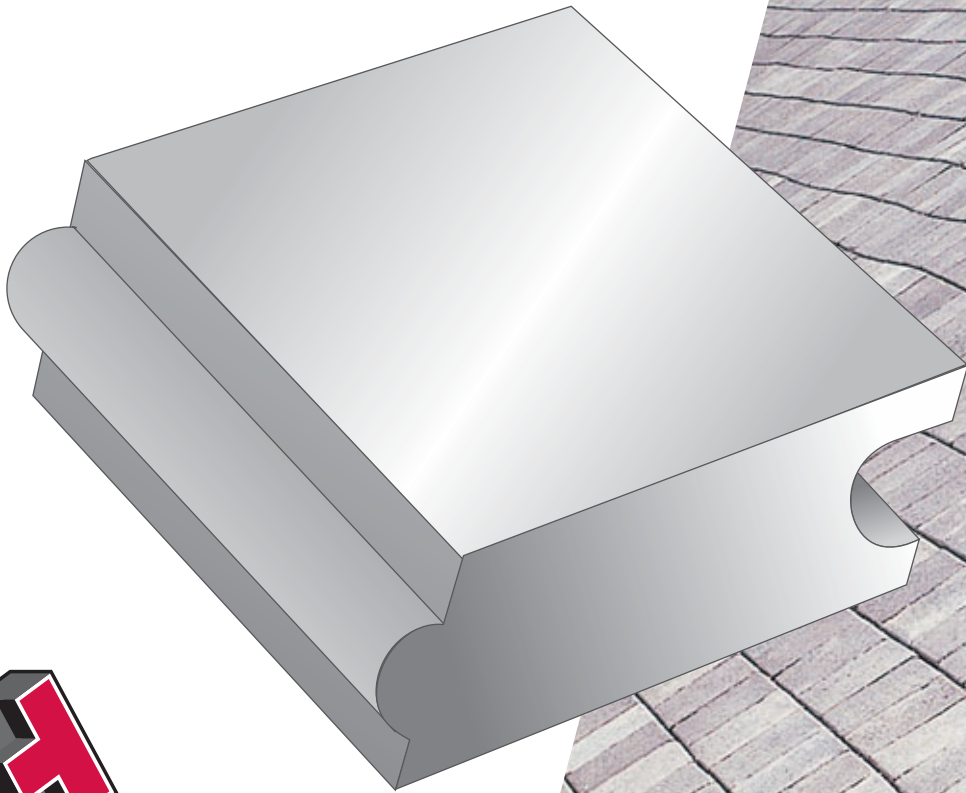


**TECHNICRETE**

**Escoline<sup>®</sup>**

**Technicrete Escoline<sup>®</sup>**, light duty cost effective erosion control block with simple tongue and groove interlock when laid in stretcher bond.



**TECHNICRETE**  
quality support

PAVING • KERBS • **EROSION PROTECTION** • RETAINING WALLS • MASONRY • HEAVY DUTY PAVEMENTS  
• MINING • SHOTCRETES • PREBAGGED PRODUCTS • STOPE SUPPORT SYSTEMS

# TECHNICRETE

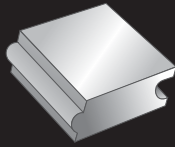
## Escoline® light duty protection block

**Technicrete Escoline® light duty cost effective erosion control block with simple tongue and groove interlock when laid in stretcher bond.**

Conventional interlocking block paving has proved to be a superior surfacing in many applications. With the use of mechanical interlocking blocks, the scope of suitable applications is made even wider.

Advantages of mechanical interlocking blocks: Maintains integrity with surrounding blocks / Any ground settlements will not dislodge an individual block / Resists uplift forces when used in channels or in sludge drying areas / security against uplift by non authorized persons is greatly improved / load transfer is direct from block to block and not via the jointing sand alone, jointing sand is less susceptible to blow out or wash out / added resistance to uplift on steep slopes.

Colours shown on front may vary from the true colour due to the printing process.



Applications	No. of blocks per m <sup>2</sup> at nominal size	Colours available	Special features	Size Length x Width Thickness
Embankment & bridge abutments Small storm water channels Linings to earth ponds Not suitable for traffic loading	51	Standard Grey Coloured products on request	Tongue and groove	140mm x 140mm x 60mm



*Please note the bedding and jointing sand should comply with SANS 1200MJ.*

Technicrete reserves the right to change or amend the contents of this document at anytime without any notice with this document intended for general information only. Any specific information required about product specifications, applications, technical information, sales conditions, warranties and guarantees as required for any design or installation should be obtained from Technicrete.



**TECHNICRETE**  
quality support

### Technicrete House

Cnr. Main Reef Road & Houtkapper Street, Roodepoort, 1725  
 Tel: 011 674 6900 – Fax: 011 672 1425  
 Email: [info@technicrete.co.za](mailto:info@technicrete.co.za)  
[www.technicrete.co.za](http://www.technicrete.co.za)  
 0861 266 267



### Branches:

**Gauteng:** Olifantfontein 011 206 8920  
 Clayville 011 316 2375  
 Carletonville 087 354 8620

**Mpumalanga:** Witbank 013 696 1153

**North West:** Stillfontein 010 005 1702

**Limpopo:** Polokwane 015 293 2082

**Free State:** Welkom 057 391 4200